

PROJECT SUMMARY

A.P.N.: 176-03-501-016
 EXISTING ZONING: C-2
 PROPOSED ZONING: M-D
 GROSS LAND AREA - 227,906 SF (5.232 AC)
 TOTAL BUILDING AREA = 86,105 SF
 LOT COVERAGE = 37 %

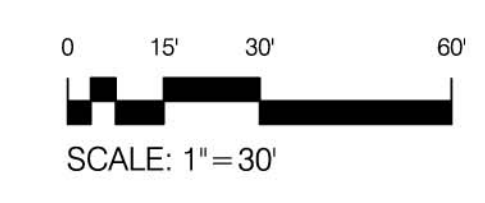
PARKING ANALYSIS

PARKING PROVIDED:		
TOTAL PARKING SPACES REQUIRED (1/1000)	87	SPACES
TOTAL PARKING SPACES PROVIDED	89	SPACES
HANDICAP PARKING SPACES REQUIRED	4	
HANDICAP PARKING SPACES PROVIDED	4	
REGULAR VAN	2	
PARKING RATIO PROVIDED :	1/1000 S.F.	

ATTACHED XREFS: Y5516.XSP, Y5516.XEL
 Date: Nov 16, 2005, 6:03am - Drawing: P:\2005\Y5516 Arroyo Industrial North IV\Drawings\Concept\Planning Submittal 11-11-05\ Y5516-A1.dwg

THE ARROYO ARROYO INDUSTRIAL NORTH IV

EJM DEVELOPMENT, CO.



SITE PLAN

LEE & SAKAHARA ARCHITECTS AIA
 ARCHITECTURE PLANNING INTERIORS
 6280 S. Valley View Blvd., Suite 116, Las Vegas, NV 89118
 TEL: (702) 270-6600 FAX: (702) 270-6643
 www.leeandak.com E-MAIL: leesak@leeandak.com



A-1

Y5516

11/11/05