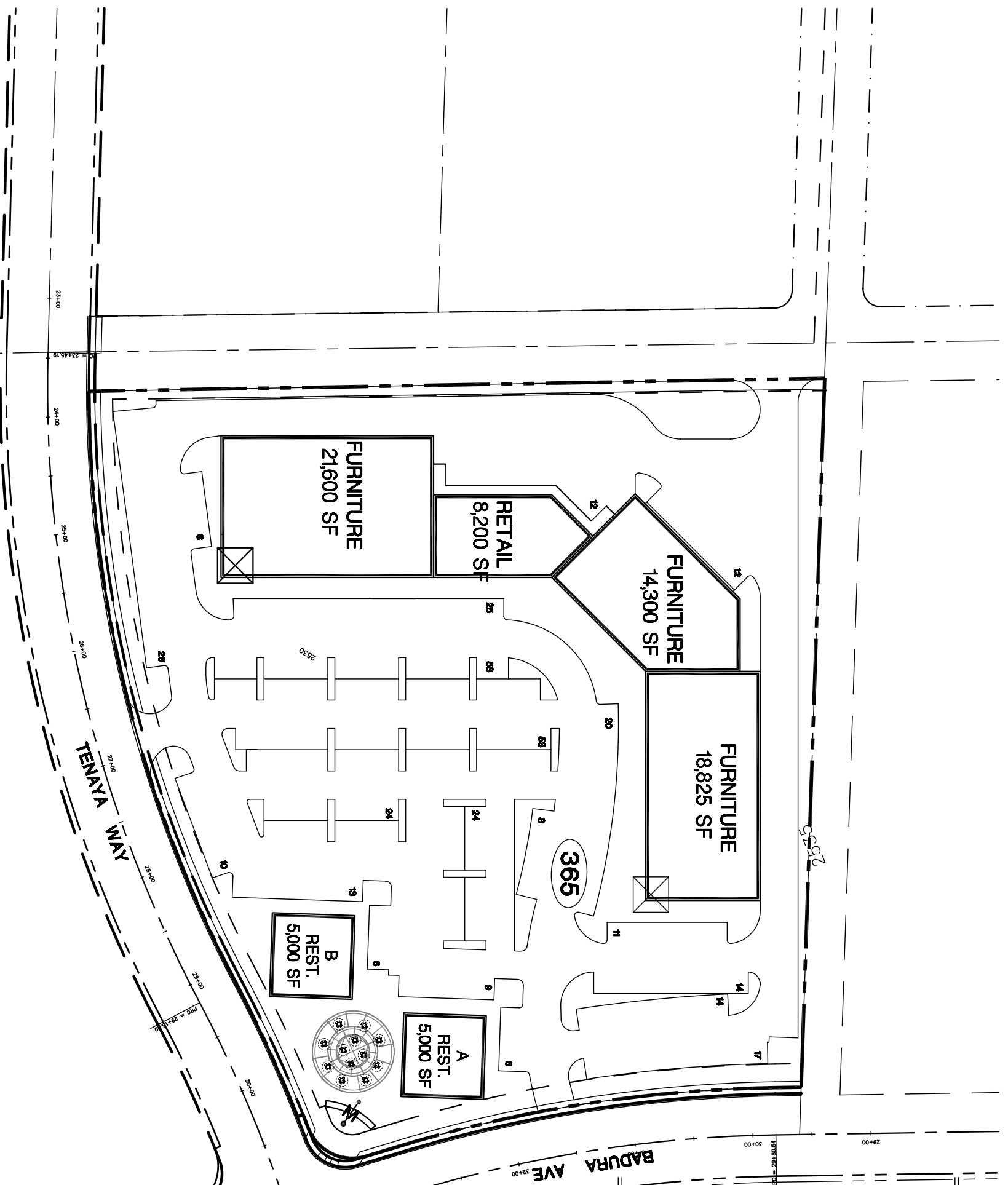


### Property Information

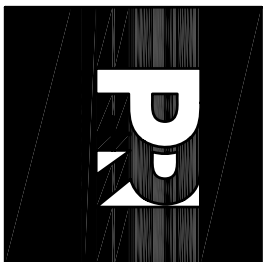
Land Area	± 8 Acres
Total Building Area	72,925 sf
Total Parking Provided	365 Stalls
Total Parking Required	222 Stalls
Parking Ratio	4.8 Stalls/1000 sf
furniture store	54,725 sf
sales area (75%)	① 1/500
storage (25%)	① 1/2500
retail = 8,200 sf	④ 4/1000
restaurant = 10,000 sf	
customer area 1/50, all other 1/200 (60/40)	
Total Parking Required	222 stalls
	89 stalls
	33 stalls
	100 stalls



**PRELIMINARY - NOT FOR CONSTRUCTION**  
 THIS PLAN HAS BEEN PREPARED WITHOUT BENEFIT OF A COMPLETE SURVEY. IT IS CONCEPTUAL IN NATURE AND NO GUARANTEE OF ITS ACCURACY IS IMPLIED.

SCALE : 1" = 100' - 0"

### ARCHITECTURAL DESIGN SITE PLAN



3980 Howard Hughes Pkwy.  
 Suite 450  
 Las Vegas, NV 89109  
 702-892-8500  
 702-892-8514 fax  
[www.praarchitects.com](http://www.praarchitects.com)  
 Corporate Office:  
 Long Beach, CA  
 Regional Offices:  
 Newport Beach, CA  
 Washington, DC  
 Las Vegas, NV

**Perkowitz Ruth ARCHITECTS**  
 SWC Tenaya Way & Badura Ave  
 Las Vegas,  
 Nevada

#### Revisions


Date: 08/2/06  
 Drawn By: SAJ  
 Checked By: SAJ  
 Project No.: 06-##-11  
 File Name: D06XXX1stSite01.dwg  
 Scale: 1" = 100'

### Site Plan

A-3